



Dark Fabric Transfer Instructions



Warning!

Please read all directions below prior to use.



Scan to link directly to how-to videos, instructions, inspiration and more!

Avery Dark Fabric Transfers are designed for dark coloured 100% cotton fabric.

Visit avery.ca/transfers for easy-to-use design tools, templates, how-to videos, and other tips on the complete transfer line of products. Follow the steps below to ensure great-looking results.

Note: results may vary based on a variety of factors, including fabric type, ironing equipment, temperatures, and wash methods.

Need Help?

We have the answers to your questions.

Contact us/Contactez-nous:

Besoin d'aide?

Nous avons les réponses à toutes vos questions.

avery.ca 1-888-462-8379

Dos & Don'ts of Fabric Transfers:

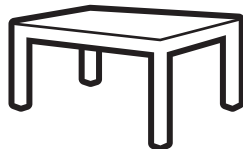
- **Don't** use a laser printer.
- **Don't** use steam in the iron.
- **Don't** use an ironing board, glass, granite, concrete or other heat sensitive or heat-retaining surfaces.
- **Do** empty all water from the reservoir and put steam setting to off.
- **Do** iron on a heat resistant surface, such as a wooden table.
- **Do** follow washing instructions before wearing.



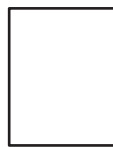
Items Needed:



Pre-washed 100% cotton or poly/cotton blend, dark coloured fabric



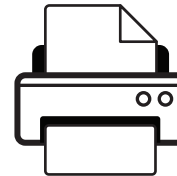
Waist-high smooth heat-resistant surface



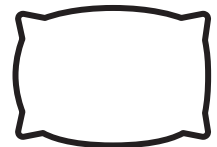
Parchment paper (provided)



Household iron or heat press

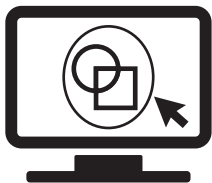


Inkjet printer



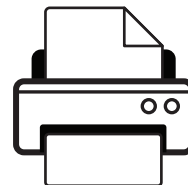
Large cotton pillowcase or other cotton fabric at least 1/4" thick

1. Design & Print



Design

- Go to avery.ca/print and customize your design, using our free templates and online design tools.
- Note: Dark Fabric Transfers do not require images to be flipped.



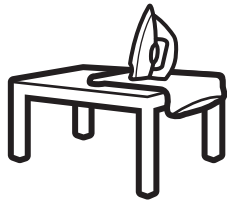
Print

- Test print your design on plain paper to ensure the design looks accurate.
- Feed one transfer sheet at a time.



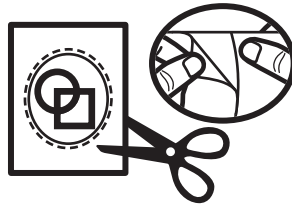
FOR USE IN INKJET PRINTERS ONLY.

2. Prep & Ironing



Prep workspace

- Place a pillowcase down on a hard, heat-resistant surface; a wooden table is best. (Do not use an ironing board).
- Be sure iron does not have water in it and steam setting is off.
- Set the iron to the cotton setting and preheat for 5 minutes.
- Iron the pillowcase and garment to remove wrinkles.
- Use extreme caution when ironing. Avoid leaving iron face-down on work surface for extended period of time as it may result in injury or damage to the project or work surface.



Trim & Peel Material

- Cut out design with a narrow margin around image.
- Keep edges rounded (if possible) to avoid lifting during ironing and washing.
- Place transfer on flat hard surface with instructions facing up. Easily peel away the three-piece backing sheet by bending at crease on the top of the sheet to expose a corner of the backing paper. Gently peel each strip from top to bottom, one at a time.



Ironing

- Place transfer design face up on garment in desired location.
- Cover transfer with provided parchment paper.
- When ironing the transfer, make sure to apply firm pressure slowly from left to right, top to bottom and on each corner.
- Turn off iron when finished.

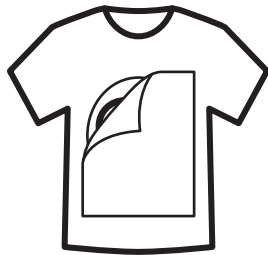
Approximate Ironing Time:

Image Size	Ironing Time
Full sheet	2 minutes
1/2 sheet	1 minute
1/4 sheet	40 seconds

Heat Press Instructions:

Temperature	320°F (160°C)
Time	30-45 seconds
Pressure	Light/Medium

3. Finishing & Care



Finish transfer

- After ironing, remove your garment from the workspace area and allow to cool for 2-3 minutes.
- Smoothly and slowly peel parchment paper away from top corner to bottom corner.
- If your image begins to lift, iron the image again with parchment paper still in place, focusing on the lifting areas. Let cool once more before attempting to peel again.



After Care and Maintenance

- Wait 24 hours before washing garment once transfer is applied.
- Wash garment before wearing:
 - Turn garment inside out and set machine to cold.
 - Use colour-safe mild detergent and wash separately from other clothes.
 - Do not use bleach or fabric softener.
 - Remove promptly, as colours may bleed if left wet too long.
- Lay flat to dry or tumble dry on the lowest heat setting with garment turned inside out.
- Do not iron directly on transfer once it has been applied.
- The transferred image is not intended to withstand stretching other than normal wear and tear.

